

LOAD AND PACK

Broyhill
when only perfection will do



Shown with New 9.5 cu yd compactor box.



REDUCE WORK COMP
INCREASE YOUR ROI
SAVE TIME
CUT COSTS
ONE OPERATOR

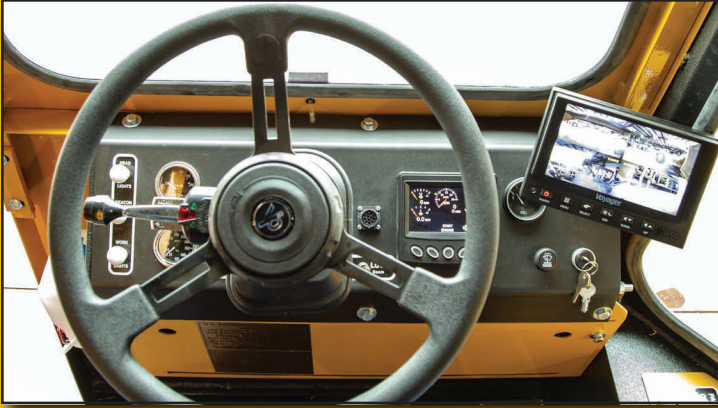
Load-And-Pack®, with one operator,
empties up to 400-600 trash cans per day

Used in Most Major Parks and Beaches
both Inland and Coastal

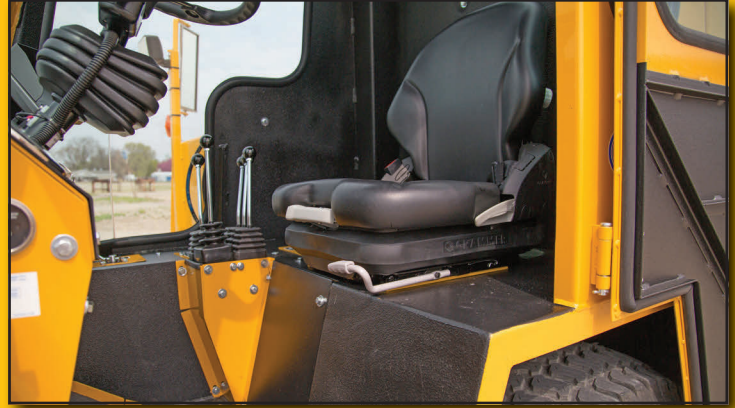
IMPROVED Model 74-TD 3.6 includes:

- Airide cab & seat
- All glass windows
- Deutz performance
- 4 way cameras for safety
- LED lighting and 12V cab outlets
- 100 amp alternator
- Galvannealed steel cab for corrosion resistance
- Radiator overflow reservoir
- 17 Additional Improvements

FEATURES



ADJUSTABLE TILT STEERING WHEEL with 5 positions allows for ease of driving for all Load-And-Pack users. Large dials & camera monitor on right side.



AIR RIDE CAB AND SEAT with seat safety switch in all Load and Packs.



CAMERA MONITOR with 4 cameras placed on the left and right side, rear of vehicle, for added safety. Plus view of compactor box.



SLOW MOVING VEHICLE SIGN on vehicle and compactor box.



12V OUTLETS for inside of cab.



AIR RIDE CAB AND SEAT is standard

NEW CAB DOORS
Cab door is Galvannealed steel with keyed lock and is wider (29 1/2")

Armor coating on inside and cab floor.

Automotive sealer on cab roof and bolts.

CAB STEP

NEW DEUTZ 74 HP DIESEL ENGINE:

3.6 Liter, 4 cylinder 74 hp AT 2600 rpm. Tier 4 Final CARB, EEC, EPA. Vehicle travels up to 20 mph.

2 PART POLYURETHANE PAINT provides a durable, corrosion-resistant finish.



FRONT DUMPING 4 TO 1 COMPACTOR BOX

FEATURES



LED LIGHTING standard on cab, front and rear with an additional LED focused on the grip arm area. Head lights are LED High-Low beam.



STRONGER ARTICULATION JOINT Pivot shafts and bearings are able to handle 50% greater radial load. Longer vertical shaft spreads the bearings for better frame strength. Bearing blocks and bolts are also larger for improved strength. Greased, sealed bearings.



SHOVEL HOLDERS are standard on all boxes.



BOX FLOOR SCRAPER keeps debris away from compactor box hinge.



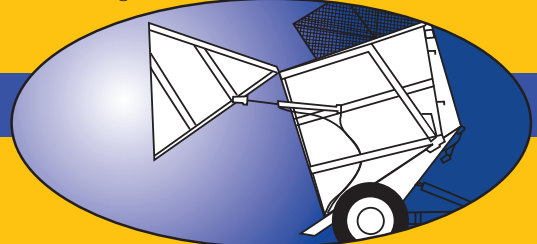
METAL WINDSCREENS AND NYLON WHISKERS
Retain the garbage in the compactor box and cans even on the windiest days.



NEW GRIP ARMS overlap for positive container grip. Cycle time for lift and return is approximately 5 seconds. Hydraulic grip has been designed to grab and lift up to 500 pounds, and containers from 26 to over 90 gallons.



REAR DUMPING 4 TO 1 COMPACTOR BOX



SELF DUMPING 4 TO 1 COMPACTOR BOX

PARKS, BEACHES & TRAILS



4-wheel drive makes the Load-And-Pack® ideal for use on the softest sand as well as hard surfaces. Large tires provide turf protection and excellent flotation.



Famous properties utilize our unique refuse collection system. Trash pickup is time consuming, takes lots of manpower and impacts safety records.



Use the versatile Load-And-Pack® in parks, beaches and trails! Great on board walks and other hard to access areas.



Utilized downtown on the Mississippi River front.



Handles most containers without damage; plastic containers, wire baskets or steel drums. Adjustable grip pressure and hydraulic lock valves maintain a secure grip.



Center articulated design and power steering maximizes maneuverability. Drive anywhere, back out with ease.



Private campgrounds need eco-friendly equipment around visitors.

4 EASY STEPS



step
1

The Load-And-Pack® grips most container sizes from 26-gallon up to 90+ gallon, depending on grip arm options. Securely lifts up to 500 lbs of refuse in a single container.



step
2

Hydraulics quickly lift and empty refuse containers. Lift, dump, and return in approximately 5 seconds.



step
3

Compacts refuse while traveling. All 7 and 9.5 cu yd boxes have a 4:1 compaction rate – handling up to 28 or 38 yards of refuse in a single load.



step
4

Easily off-load a filled box and on-load an empty box to continue your route.

COMPACTOR BOXES



FRONT DUMP 4 TO 1 COMPACTOR BOX

Compatible with most packers. The Load-And-Pack® uses 7 or 9.5 cu yd compactor boxes with front dumping capabilities. Hydraulically off and on-load compactor boxes easily with one operator



REAR DUMP 4 TO 1 COMPACTOR BOX

The Load-And-Pack® uses 7 cu yd compactor boxes with rear dumping capabilities.



SELF DUMP 4 TO 1 COMPACTOR BOX

An optional self-dumping 7 or 9.5 cu yd box is available for use with stationary compactors and/or ground dumping operations.

Call or checkout our WEB and YouTube videos.

Broyhill Manufacturing Co. - Dakota City Nebraska 68731

One North Market Square, Box 475

Phone: 402.987.3412 Fax: 402.987.3601

Sales Order Placement: 800.228.1003

www.broyhill.com email: sales@broyhill.com

© Copyright 6/19

Distributed by: BMC • Form - 11462-4

NEW BOX



Our NEW 9.5 cu yd compactor box with front & self-dumping capabilities. Holds up to 10 more cu yds of compacted refuse.

TESTIMONIALS

"The best piece of equipment for the job. It is our second one and we have averaged over 10 years of daily use. Very fast response and assistance with parts. Highly recommended A/C and cab. Our beach won #2 in the United States from the Travel Channel this year."

"Since the early 80s our Recreation Department has been using Load-And-Pack to empty wire mesh trash baskets. Your machines are efficient and effective in our beach environment. Also, they're strong and durable and are built to work day in and day out.

Parts ordered are right parts and are delivered in a timely manner. Your machines have enabled us to keep our beach one of the most popular tourist destinations in the world!"

"As the operator of a Load-And-Pack for the last four years, it's great to have a piece of equipment that was designed for our use. We have approximately one hundred and fifty waste cans throughout our town and beach. This machine makes it so easy! In fact, I love to use it each season."

"Great machine !!! Big savings over the long haul. The old way we were doing it was with inmate labor and tractor with trailer."

"When I started looking for a barrel dumper to use instead of removing bags from fifty-five gallon drums by hand, I remembered seeing the Load-And-Pack in Myrtle Beach, SC. The rest is history. The Load-And-Pack is very easy to drive on the streets and easy to turn in and out on cul-de-sacs like they claimed it would. The Load-And-Pack cut my time from about four hours a day to one-and-a-half hours on the beach and streets. I recommend it to anyone who works with barrels anywhere. The cab is also a great lifesaver. We often have rain showers and the temperature is up and down, so the heat and air in the cab are great. It is also very easy to learn to drive."

Broyhill

when only perfection will do