

ProTech G-300 Series

Broyhill

when only **perfection** will do



ProTech G-300 Series

Broyhill
when only **perfection** will do

The Most Flexible
Turf and Industrial Sprayer



I-2566-FW

15 ft. 3 section low profile boom with boom protectors and mounting brackets for the ProTech sprayer. Boom features 19 flat fan extended range tips (SSXR8004VS) and diaphragm check nozzle bodies on 10" spacings. Control package is ordered separately.

I-2567-FW

21 ft. 3 section low profile boom with boom protectors and mounting brackets for the ProTech sprayer. Boom features 13 Turbo Flood tips and diaphragm check nozzle bodies on 20" spacings. Control package is ordered separately.

I-2632

Motorized ball valve kit features viton seals, poly ball and nylon stem, open to close in .75 seconds, rated at 300 psi/32 gpm. Kit includes ball valve, mounting bracket, necessary hardware and power cable. Available for Broyhill turf boom plumbing packages. When ordering ball valve kit with control package - deduct \$395.00 retail for price of solenoids (**SSAA144A-3**).



(Walking Boom Optional) I-1575D

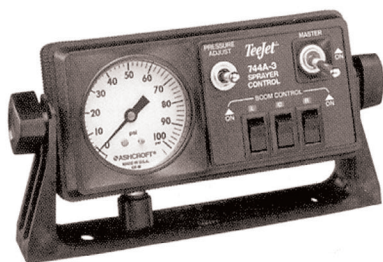


I-2612-LP

Foam marker system with 1 gal. tank and mounting brackets for Broyhill's low profile booms. Built-in compressor, right/left remote switch, 2 vertical foam nozzles, 2 x 10 ft. of air/liquid tubing, 6.5 ft. of power supply cable, 10 ft. of cable for remote switch box, flow regulator.

I-2413

Broyhill's optional **air gap tank filler** meets most codes for anti-siphon tank filling (uninstalled). Stainless steel mounting assembly.



Sprayer Control

I-2469-FW

Electric control package with Spraying Systems 744 control, gauge isolator, master on/off switch, three 100 psi Spraying Systems solenoid valves and 3/4" electric pressure regulator.

I-2543-FW

Manual control package with Spraying Systems 17L series TeeValve and mounting hardware for mounting to the ProTech series sprayer.



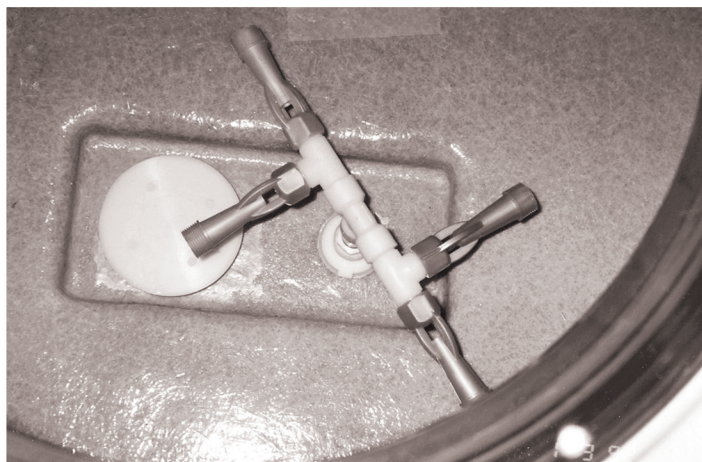
Raven 450 Control

I-2530-RA-FW

Raven 450 Control Kit with control console, power cable, flow meter, speed sensor and regulating valve.

I-2389-1

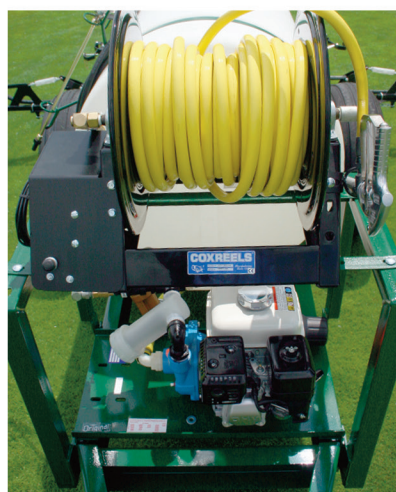
Single unit solenoid kit converts existing boom to electric on/off.



Quadra-jet agitation volume can be throttled. Anti-vortex suction fitting and deep sump for maximum chemical withdrawal are all standard.



Hose Reel Assemblies (Less Hose)
Reels hold up to 200 ft. of 1/2" ID Hose.



Spray Gun Kits

I-2072

High pressure (600 psi) gun kit with 50 ft. hose & trigger grip gun. 14 lbs.

I-2072-100

High pressure (600 psi) gun kit with 100 ft. hose & trigger grip gun. 24 lbs.

I-2072-200

High pressure (600 psi) gun kit with 200 ft. hose & trigger grip gun. 33 lbs.

ProTech G-300 Series

Broyhill
when only **perfection** will do

ProTech G-300 Series

TRAILER SERIES (with Terra Tires)

300 gallon/ProTech G300 Series

Tank Gallonage & Material	Pump	GPM/PSI	Agitation	Ship Wt.	Engine/HP
300 poly	Dia/D115	30/290	Quadra-Jet	500 lbs.	8/manual
300 poly	Dia/D503	15/580	Mechanical	500 lbs.	8/manual
300 poly	Cent/9202C	67/60	Quadra-Jet	410 lbs.	8/manual
300 poly	Cent/9202C	67/60	Quadra-Jet	410 lbs.	8/electric start

Honda Units

Order Number

M-3030P-D115/8H-TR

M-3030P-D503/8H-TR

M-3030P-C/8H-TR

M-3030P-C/8H-ETR

Broyhill upgrades the most versatile sprayer in the industry. The Protech Series.

Broyhill made a great 300 gallon sprayer even better by designing a new, custom, proprietary, 300 gallon, low profile tank. The new tank boasts a patented, offset, fill well with a spill-moat that prevents a chemical spill from reaching the ground. Gallonage markings are visible from the operator's seat.

A high-volume centrifugal pumping system supplies more than enough volume to operate the Broyhill Quadra-Jet agitation system ensuring a proper chemical mixture. If you prefer higher pressures a diaphragm pumping system with a stainless-steel mechanical agitation system will guarantee proper agitation.

The skid features a heavy duty boxed design frame for rugged pickup or flatbed installations, an optional trailer package is also available. Numerous trailer options include heavy duty step fenders, either a manual or electric hose reel kit, spray gun kits from 50 to 200 feet of hose, hood assembly over the engine and pump, electric light kit and your choice of cargo or soft-trac terra rib tires.

Aside from the spray gun kits, either a 15' boom with 10" spacing or a 21' boom with 20" spacing can be added.

A boomless nozzle is also available for broadcast applications. An assortment of electronic and manual application control packages compliment the lineup along with the Broyhill Accuspeed walk boom with electronic speedometer, boom actuators to raise and lower the outer boom sections, boom protectors, outer boom wheel kits and a foam marking system. Most of the above have Broyhill innovations over the years.

Topping off the safety features, Broyhill offers an optional air gap tank filler kit which meets code for anti-siphon tank filling where needed.

All told that's why Broyhill claims the Protech Series is the most versatile and easy to use sprayer in the industry. The variation of customizable options is virtually unlimited.

Inquiries may be sent to sales@broyhill.com
or via telephone: 800.228.1003 x 134.

For additional information please visit www.broyhill.com.

The Broyhill Co. - Dakota City Nebraska, 68731
PO Box 475

One North Market Square

Phone: 402.987.3412 Fax: 402.987.3601

Sales Order Placement: 800.228.1003 x134

www.broyhill.com email: sales@broyhill.com

© Copyright 7/21