

LOAD AND PACK

Broyhill
when only perfection will do



Shown with New 9.5 cu yd compactor box.



REDUCE WORK COMP
INCREASE YOUR ROI
SAVE TIME
CUT COSTS
ONE OPERATOR

Load-And-Pack®, with one operator,
empties up to 400-600 trash cans per day

Used in Most Major Parks and Beaches
both Inland and Coastal

IMPROVED Model 74-TD 3.6 includes:

- Airide cab & seat
- All glass windows
- Deutz performance
- 4 way cameras for safety
- LED lighting and 12V cab outlets
- 100 amp alternator
- Galvannealed steel cab for corrosion resistance
- Radiator overflow reservoir
- 17 Additional Improvements

4 EASY STEPS



step
1

The Load-And-Pack® grips most container sizes from 26-gallon up to 90+ gallon, depending on grip arm options. Securely lifts up to 500 lbs of refuse in a single container.



step
2

Hydraulics quickly lift and empty refuse containers. Lift, dump, and return in approximately 5 seconds.



step
3

Compacts refuse while traveling. All 7 and 9.5 cu yd boxes have a 4:1 compaction rate – handling up to 28 or 38 yards of refuse in a single load.



step
4

Easily off-load a filled box and on-load an empty box to continue your route.

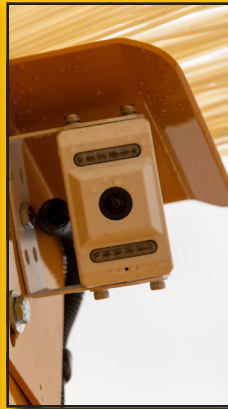
FEATURES



ADJUSTABLE TILT STEERING WHEEL with 5 positions allows for ease of driving for all Load-And-Pack users. Large dials & camera monitor on right side.



AIR RIDE CAB AND SEAT with seat safety switch in all Load and Packs.



CAMERA MONITOR with 4 cameras placed on the left and right side, rear of vehicle, for added safety. Plus view of compactor box.



SLOW MOVING VEHICLE SIGN on vehicle and compactor box.



12V OUTLETS for inside of cab.



AIR RIDE CAB AND SEAT is standard

NEW CAB DOORS
Cab door is Galvannealed steel with keyed lock and is wider (29 1/2")

Armor coating on inside and cab floor.

Automotive sealer on cab roof and bolts.

CAB STEP

NEW DEUTZ 74 HP DIESEL ENGINE:

3.6 Liter, 4 cylinder 74 hp AT 2600 rpm. Tier 4 Final CARB, EEC, EPA. Vehicle travels up to 20 mph.

2 PART POLYURETHANE PAINT provides a durable, corrosion-resistant finish.



FRONT DUMPING 4 TO 1 COMPACTOR BOX

FEATURES



LED LIGHTING standard on cab, front and rear with an additional LED focused on the grip arm area. Head lights are LED High-Low beam.



STRONGER ARTICULATION JOINT Pivot shafts and bearings are able to handle 50% greater radial load. Longer vertical shaft spreads the bearings for better frame strength. Bearing blocks and bolts are also larger for improved strength. Greased, sealed bearings.



SHOVEL HOLDERS are standard on all boxes.



BOX FLOOR SCRAPER keeps debris away from compactor box hinge.



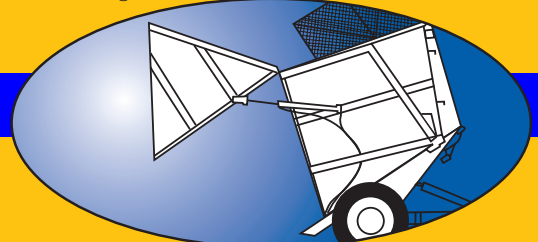
METAL WINDSCREENS AND NYLON WHISKERS
Retain the garbage in the compactor box and cans even on the windiest days.



NEW GRIP ARMS overlap for positive container grip. Cycle time for lift and return is approximately 5 seconds. Hydraulic grip has been designed to grab and lift up to 500 pounds, and containers from 26 to over 90 gallons.



REAR DUMPING 4 TO 1 COMPACTOR BOX



SELF DUMPING 4 TO 1 COMPACTOR BOX

PARKS, BEACHES & TRAILS



4-wheel drive makes the Load-And-Pack® ideal for use on the softest sand as well as hard surfaces. Large tires provide turf protection and excellent flotation.



Famous properties utilize our unique refuse collection system. Trash pickup is time consuming, takes lots of manpower and impacts safety records.



Use the versatile Load-And-Pack® in parks, beaches and trails! Great on board walks and other hard to access areas.



Utilized downtown on the Mississippi River front.



Handles most containers without damage; plastic containers, wire baskets or steel drums. Adjustable grip pressure and hydraulic lock valves maintain a secure grip.

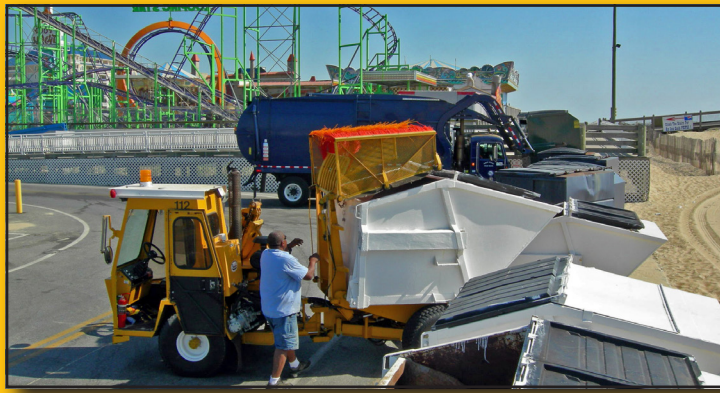


Center articulated design and power steering maximizes maneuverability. Drive anywhere, back out with ease.



Private campgrounds need eco-friendly equipment around visitors.

COMPACTOR BOXES



FRONT DUMP 4 TO 1 COMPACTOR BOX

Compatible with most packers. The Load-And-Pack® uses 7 or 9.5 cu yd compactor boxes with front dumping capabilities. Hydraulically off and on-load compactor boxes easily with one operator



REAR DUMP 4 TO 1 COMPACTOR BOX

The Load-And-Pack® uses 7 cu yd compactor boxes with rear dumping capabilities.



SELF DUMP 4 TO 1 COMPACTOR BOX

An optional self-dumping 7 or 9.5 cu yd box is available for use with stationary compactors and/or ground dumping operations.

Call or checkout our WEB and YouTube videos.

Broyhill Equipment LLC - Dakota City Nebraska 68731
One North Market Square, Box 475
Phone: 402.987.3412 Fax: 402.987.3601
Sales Order Placement: 800.228.1003, ext. 134
www.broyhill.com email: sales@broyhill.com
© Copyright 4/24

NEW BOX



Our NEW 9.5 cu yd compactor box with front & self-dumping capabilities. Holds up to 10 more cu yds of compacted refuse.

TESTIMONIALS

"The best piece of equipment for the job. It is our second one and we have averaged over 10 years of daily use. Very fast response and assistance with parts. Highly recommended A/C and cab. Our beach won #2 in the United States from the Travel Channel this year."

"Since the early 80s our Recreation Department has been using Load-And-Pack to empty wire mesh trash baskets. Your machines are efficient and effective in our beach environment. Also, they're strong and durable and are built to work day in and day out.

Parts ordered are right parts and are delivered in a timely manner. Your machines have enabled us to keep our beach one of the most popular tourist destinations in the world!"

"As the operator of a Load-And-Pack for the last four years, it's great to have a piece of equipment that was designed for our use. We have approximately one hundred and fifty waste cans throughout our town and beach. This machine makes it so easy! In fact, I love to use it each season."

"Great machine !!! Big savings over the long haul. The old way we were doing it was with inmate labor and tractor with trailer."

"When I started looking for a barrel dumper to use instead of removing bags from fifty-five gallon drums by hand, I remembered seeing the Load-And-Pack in Myrtle Beach, SC. The rest is history. The Load-And-Pack is very easy to drive on the streets and easy to turn in and out on cul-de-sacs like they claimed it would. The Load-And-Pack cut my time from about four hours a day to one-and-a-half hours on the beach and streets. I recommend it to anyone who works with barrels anywhere. The cab is also a great lifesaver. We often have rain showers and the temperature is up and down, so the heat and air in the cab are great. It is also very easy to learn to drive."

Broyhill
when only perfection will do

2023 Model TD 3.6 Load-And-Pack Specifications

DESCRIPTION

Length: 21 ft. w/9.5 cu yd box and with arm down.
16 ft. 6 in. without box and with arm down.
Width: 6 ft. 9 in. (8 ft. 1 in. with mirrors).
Height: 110 in. with box in open position.
133 in. with windscreen in compacted position.
144 in. with lift arm in top position.

Wheel Base: 108 in.

Turning Diameter: 42 ft. 1 in. OD with mirrors and
36X13.50-15 tires.

Weight:

Base unit: 7300 lbs.

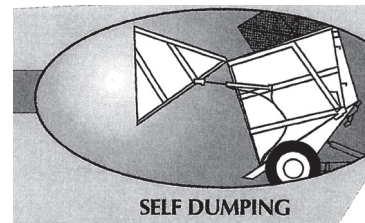
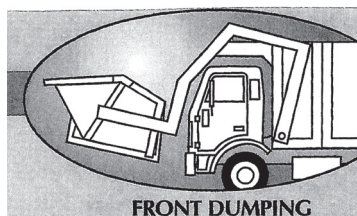
With 9.5 cu yd box: 2150 lbs.

Empty total: 9450 lbs. (with compactor box).

Vehicle Max. Gross: 12,900 lbs.

Broyhill®

when only **perfection** will do



#7 BOXES:

Rear Dumping: 2150 lbs. (poly covers)

Capacity: 7 cubic yards.

(28 cu.yds. compacted)

Overall length: 110 in.

Width: 81 in. (87 in. pin width)

Height: 67 in.

Shovel holders included

(All weights and measures are
approx. and subject to change)

#9.5 BOXES:

Front: 2150 lbs.

Self-Dumping: 2450 lbs.

Capacity: 9.5 cu.yds.

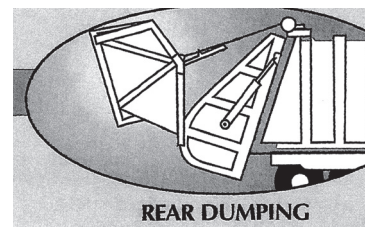
(38 cu. yds. compacted)

Overall length: 124 in.

Width: 81 in.

(87 in. pin width)

Height: 67 in.



AIR RIDE SEAT EQUIPMENT

Instruments in a centralized engine control panel: volt gauge, oil pressure gauge, water temperature gauge, fuel gauge, electronic tachometer, hour meter. Hydraulic oil temperature gauge, hydrostatic charge pump pressure gauge, driving horn button, turn signal, flashers and neutral start switch. Cab and lockable door made from galvanized steel. Light switches, Head, Work, and Strobe Lights, 12 volt power outlet. Receiver hitch on vehicle front for emergency towing. Vehicle speed: up to 20 mph - OFF ROAD

Controls Valves:

GRIP-LIFT, to clamp refuse container for lifting and transport refuse container to dump position.

CRUSH, to crush top refuse downward in compactor box.

TILT, to separate compactor box from vehicle.

COMPACT, to compress refuse in compactor box.

OPEN-CLOSE, optional, on a self-dump compactor box.

Deodorizer (optional) for spray garbage containers with Febreze/disinfectant.

Ignition switch.

Green neutral light. Cup holder. Hand throttle. Low hydraulic oil buzzer.

Foot treadle, hydrostatic directional and vehicle brake.

Windshield & other windows: Safety glass.

Windshield wiper: electric, two speed.

Air cushioned seat with weight adjustment for operator, includes seat belt.

Air conditioner, heater, defroster, and cab fan.

Mud flaps on front wheels.

Raptor coating on cab inside, cab floor, under cab, and fenders.

Automotive sealer on cab roof and bolts.

EPA spill kit in cab.

Cab step.

LOADING ARM CAPACITY

Standard lift arm will grip and lift 26 to 90+ gallon containers weighing up to 500 lbs, 5 second cycle time (approx.) added steel thickness for less flex. Smaller containers require shorter/smaller grip arms. Please specify your containers being used.

ENGINE

74 hp. Deutz Tier IV Final (4 cylinder) 3.6 liter
Emission Certifications: CARB; EEC; EPA
Fuel tank: 32 gal. approx.
Fuel: No. 1, No. 2 or DF-A, DF-1, DF-2. Low Sulfur.
Coolant: 4.5 gal. approx. (shipped 1/2 permanent antifreeze, 1/2 water.) with overflow reservoir.
95-amp alternator.

TRANSMISSION/DUAL HYDRAULIC PUMPS

Saur Danfoss tandem hydrostatic, Hayes gear pump drive, variable displacement pumps & fixed displacement Charlynn/Eaton Hydraulic motors.

Hydraulic oil: Mobil DTE25: capacity, 30 gal. approx.

Hydraulic filter system, 5 micron absolute rating on charge pump filter and 10 micron absolute rating on return filter.



DIFFERENTIAL/AXLE

Dana Corporation. Front and rear, 70 series axle. (Front is Limited Slip for extra traction.)

HYDRAULICS

Hoses are protected by using hose with super-tough abrasion resistant. Prince Hydraulic cylinders with heavy duty seals.

ARTICULATED JOINT

Improved articulation joint and sealed spherical bearings. Joint is up to 60% stronger with bearing radial load increased 50% over earlier models.

HEAVY DUTY WHEEL & TIRE

Wheels, 8 holes on 6.5 B.C. (5/8" 90 degree nut). Rod reinforced. Tires, 36 x 13.50-15 NHS, Titan high flotation, all terrain.

BRAKE

Vehicle brake is hydrostatic.

Ausco parking and emergency brakes are a hydraulic release fail safe with manual activator in cab (4 wheel). Hand auxiliary emergency brake.

BACK-UP HORN

Automatic, 12 volt, 125 dB.

PAINT

Vehicle paint - 2 part industrial yellow polyurethane.

Compactor box paint-2 part white polyurethane.

LIGHTS/CAMERAS

2 high-low beam LED headlights, LED work lights (front and cab rear), 2 LED taillights, 4 turn signals, 4 flashers, 1 lift arm light, 1 box and compactor light, strobe light, dome light, LED backup light, lighted instrument gauges. 4 way cameras (back, sides, and compactor box).

COMPACTION

15 second cycle time (approx.) 4-to-1 density.

STEERING

Articulation pivot, full load sensitive Char-lynn hydraulics. Tilt steering wheel (5 positions).

*Specifications subject to change without notice. F.O.B. Dakota City, Nebraska
© The Broyhill Equipment LLC 10/1/22; Form 11550-17
www.Broyhill.com to view demo video*